

Some of the many included features at Terricina at Tramonto:

Flex Design Floorplans - Front Yard Landscaping - Painted Block Rear Fencing - Garage Pre-Wired for Opener - Ground mounted 12 SEER A/C - Dual Pane Tinted Windows - 50 Gallon Gas Water Heater and Heating - Copper Plumbing - Advanced Structured Wiring Package for Phone and Cable - Ceiling Fans in Master and Family Room - 8' Front Door - Choice of Raised Panel Colonial or Clasique Interior Doors - Choice of Selected Interior Paint Colors - Choice of Stainless Steel or Porcelain/Steel Kitchen Sink - Oak Paneled Cabinet Doors in Choice of Selected Stains - GE Appliances including Self-Cleaning Range - Refrigerator Space Pre-Plumbed for Ice Maker - Master Suites w/Walk-In Closets, Garden Tub and 36" High Cultured Marble Countertops w/Integral Bowls Sinks - And So Much More!

Aspen - Plan 301

Single Level - 3 Bedrooms - 2 Baths - 2 Car Garage - Appx. 1,139 Square Feet

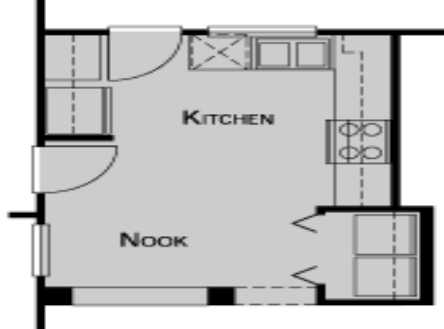


Available Flex Designs Include....

Create a Master Retreat



Move the Laundry Room



Create a Den

